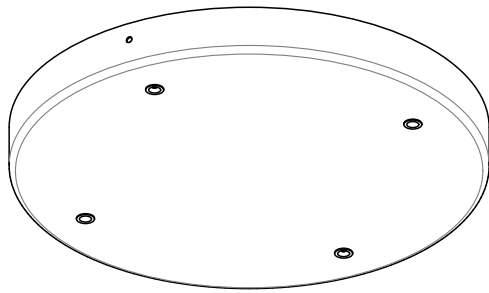




# Gala Chandelier Canopy Cross

15744 rB



## CAUTION:

Before starting, turn off power at main circuit panel.

## ADVERTENCIA:

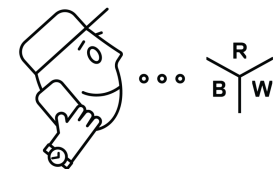
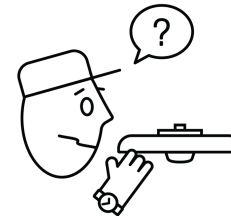
Antes de comenzar la instalación, apague la corriente en el tablero principal.

## ATTENTION:

Coupez l'alimentation avant de procéder à l'installation.

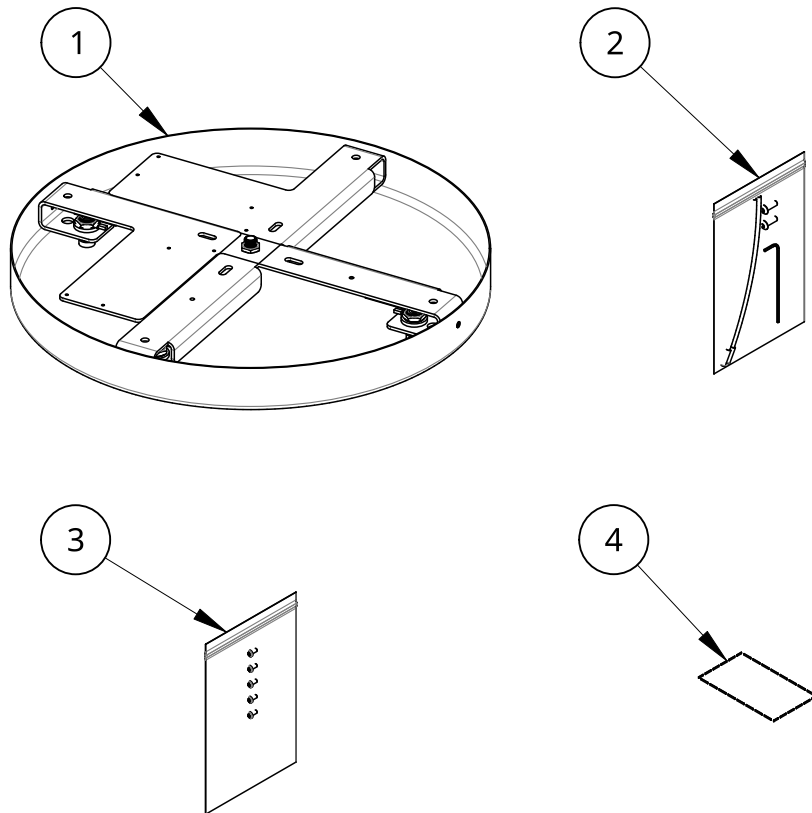


Calling for backup? Scan above to contact our team.



[www.RBW.com](http://www.RBW.com)  
+1 212 388 0399  
[support@RBW.com](mailto:support@RBW.com)  
© 2023, RBW Studio LLC

# What's Included: Part Configurations May Vary

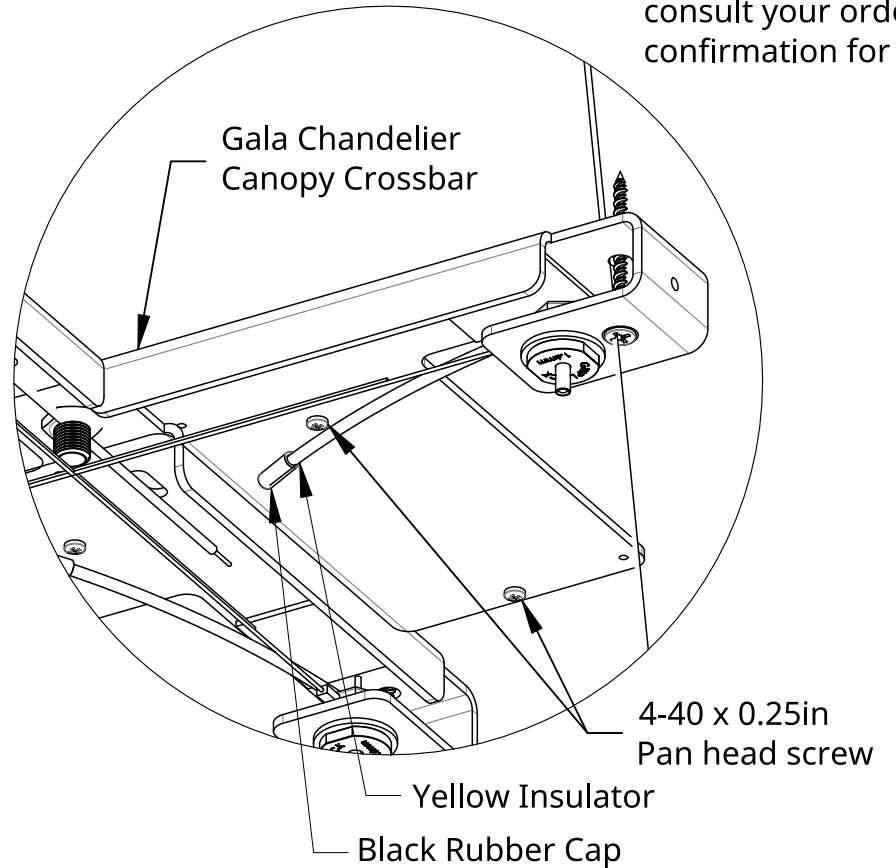
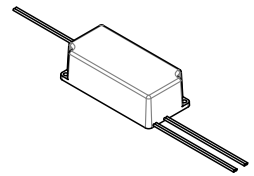


Item	Qty	Description
1	1	Gala Canopy Cross Assembly Black
2	1	Gala Canopy Mounting Kit
3	1	Gala Driver Mounting Screw Kit
4	1	LED Driver

Canopy Crossbar for 72" Boom must use 600mA Driver

Canopy Crossbar for 42" Boom must use 400mA Driver

⚠ Driver dimensions and location may vary, consult your order confirmation for details.

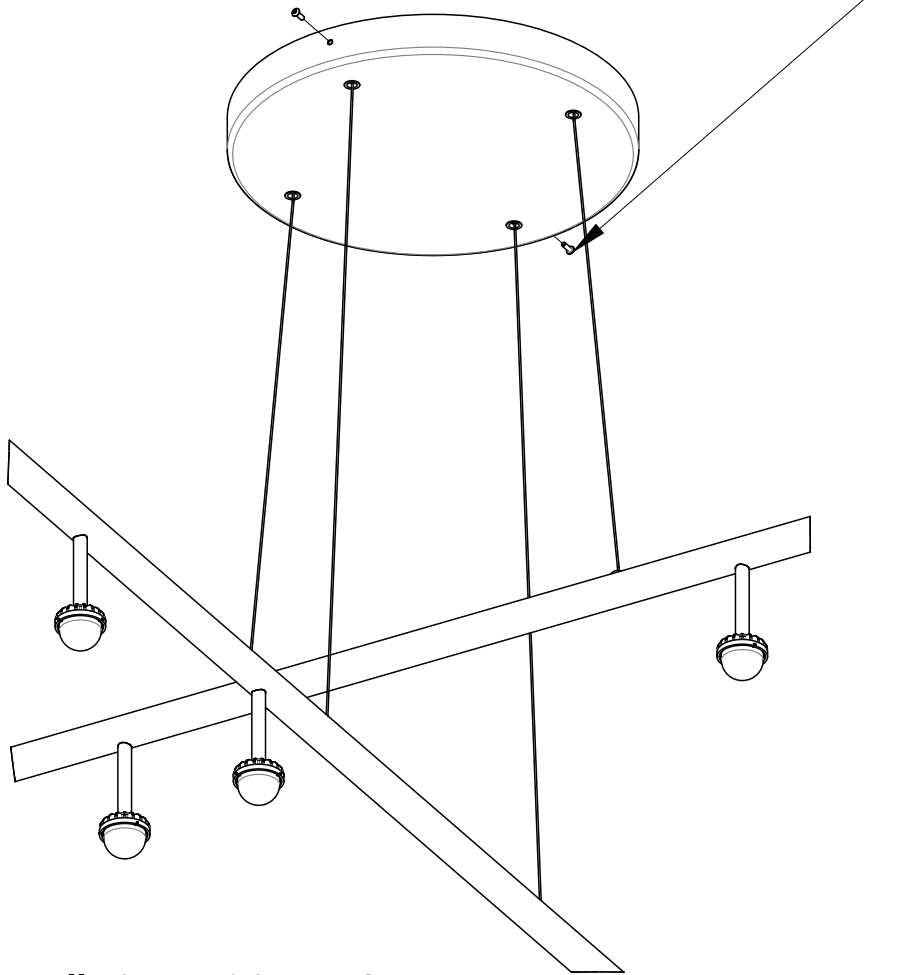


## Installation - Driver and Powered Cables

1. Fasten driver to Crossbar via included 4-40 x 0.25in pan head screws.
2. Adjust fixture to final hang height. Trim excess Cables, slide Yellow Insulators over Cables.
3. Cap Yellow Insulators with Black Rubber Caps.

See chandelier installation instructions for mounting crossbar to substrate.

8-32 x 1/2" Button Head Black-Oxide Alloy Steel Flanged Hex



Page Intentionally Left Blank

### Installation - Wiring and Canopy Screws

1. Connect Red (+) and Black (-) leads from each driver to red and black leads connected to cable grippers of each boom respectively.
2. Connect AC (L) and AC (N) leads from drivers to leads in j-box.
3. Connect ground wires from canopy to ground in j-box
4. Slide Canopy upward and cover Crossbar. Secure in place with (2) 8-32 hex screws on either side of Canopy with provided allen key.
5. Congratulations! End of guide.